

IPAT & Assistive Technology Overview

Part 2

**Jeannie Krull, MS/CCC-SLP
AT Coordinator
IPAT Technology Access Center
3240 15th St. S., Ste. B
Fargo, ND 58104
1-800-895-4728
www.ndipat.org
jmkrull@ndipat.org**



What is AT?

Assistive Technology Device

Any item, piece of equipment, or product system, whether acquired commercially, modified, or customized, that is used to increase, maintain, or improve functional capabilities of individuals with disabilities.

Assistive Technology Service

Any service that directly assists an individual with a disability in the selection, acquisition, or use of an assistive technology device.

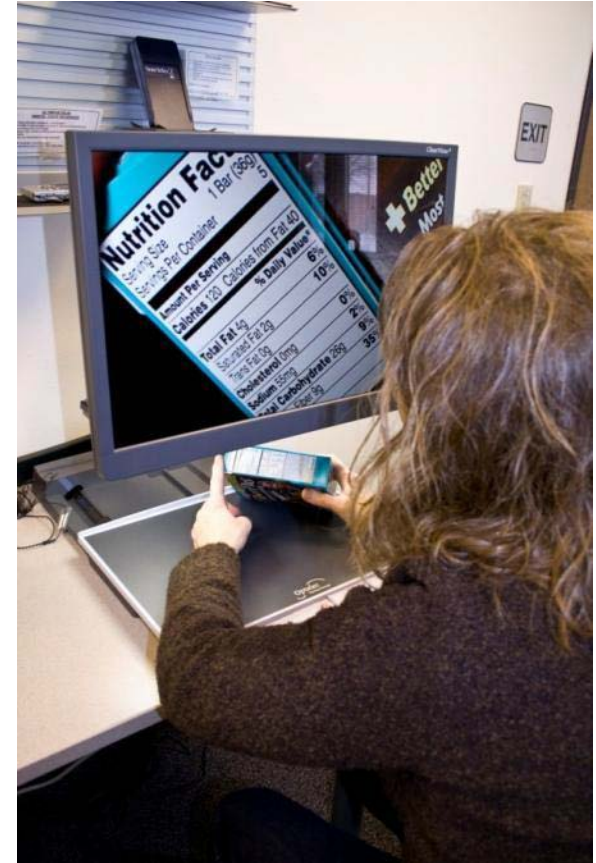
Why the Focus on AT

Provides a means by which all persons can continue to:

- Live independently;
- Enjoy self-determination;
- Benefit from an education;
- Pursue meaningful careers; and
- Enjoy full inclusion and integration into all aspects of society in the United States.

Who Needs AT?

- People with disabilities,
- Those experiencing the effects of aging, and/or
- Anyone who:
 - has difficulty performing everyday tasks,
 - wants to stay in their own home,
 - wants to work or continue to work,
 - wants to benefit from an education, and/or
 - wants to be more independent in any activity.



Four Main AT User Groups

- People who have sustained injury
- People impacted by disease, both sudden & chronic
- People who are aging
- People born with a disability

AT Myths

- AT is a magic cure-all for people with disabilities
- AT is complicated and expensive
- People want the latest and most expensive devices
- One source has all the answers
- Only people with certain types of disabilities find AT useful
- If a technology solution is available, it will be used
- Product descriptions are always accurate
- AT is a luxury

Types of AT Devices

Speech Communication Devices



GoTalk Express 32-Attainment
Approx. \$600



Tobii-S32-approx. \$1500



**7 Level Communication Builder-
Enabling Devices-\$332**

Speech Communication Devices



Dynavox Maestro
\$7800



LightWriter SL40-TobiiATI
Approx \$4500



Tobii Eye Control Module with C12-approx. \$15,000

Speech Communication Devices



iPad -\$500 plus applications

iPod Touch 4-\$229-399



Motorola-Bluetooth Speaker-EQ5-\$27

Speech Communication Devices



AssistiveChat

Speech Communication Devices



Proloquo2Go

AT for Vision

KNFB Reader-\$1500



AT for Vision



**SmartView
Graduate-\$2200**

Senseview Duo-\$995



AT for Vision

**Coil Magnifier-many sizes-
prices varies**



Pen Friend-\$140



**iTalk 90760 Voice Activated
Reminder Assistant
Clock Radio-\$60**



AT for Hearing

Alertmaster AL10-\$179



**Krown KA300 Alarm Monitor
System with Weather
Alert Radio-**

AT for Hearing

Comfort Duett-\$170



RedCat-\$1200



Ringmaster-\$70



AT for Telecommunications

Doro Memory Plus-\$85



CL65-Serne-\$150



Amplipower600-\$130

AT for Telecommunications

CapTel-\$99

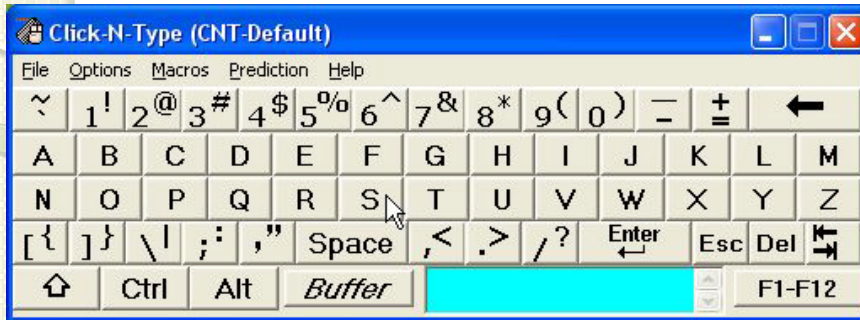


**Clarity
RC200-\$400**



AT for Computer Access

On Screen Keyboard-free

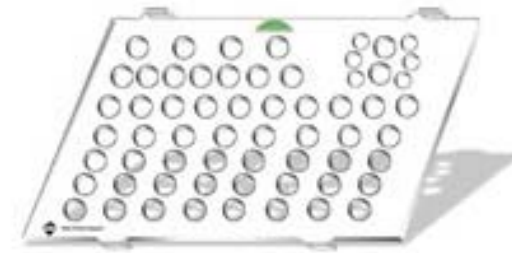


Jouse2-\$1500



AT for Computer Access

Rollermouse Free-\$220



Keyguards-price varies

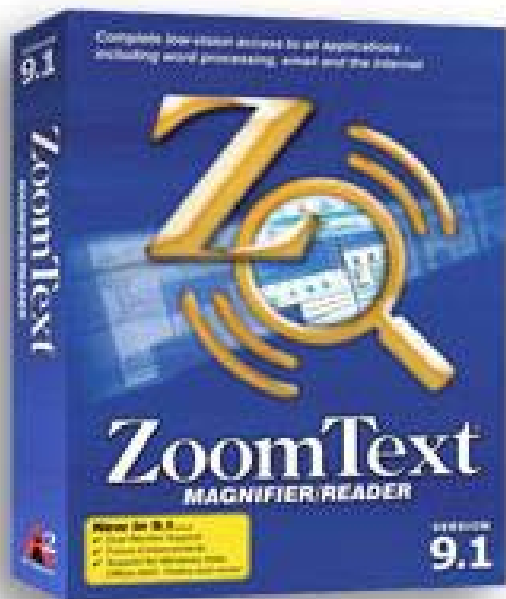
**Logitech Cordless
Trackman-\$46**



Child Sized Mini Keyboard-\$62

AT for Computer Access

ZoomText - \$600



**Foottime Mouse
-\$150**



**Headmouse with sip/puff switch
-\$995 & \$399**



AT for Daily Living

**EzSqueeze One-Handed
Can Opener-\$15**



Car door Opener-\$41-Rehabmart-
www.rehabmart.com 1-800-827-8283



Levo Book Holder-\$170

AT for Controlling Environment

Powerlink 4-\$229



Relax2-\$729



VoicelR-\$450



http://www.youtube.com/watch?v=-T7j30Bjf5o&feature=player_embedded

AT Devices for Learning



**Read& Write Gold 9.1
Mobile-\$645**



Echo SmartPen-\$200



<http://www.livescribe.com/en-us/#>

AT Devices for Learning

Dragon Naturally Speaking 11-\$99-\$200



Digital Voice Recorder-price varies



AT Devices for Memory

Medready-approx. \$150



Voice



Alert

20 Alarms



**20 Alarm Voice Alert
-approx. \$199-epill**



Jenda Lifetime Voice Calendar-\$40

AT Devices for Safety



**No Start Car Battery
Switch-\$20**

**Confounding Door
Lock-\$30**



**Electric Plug Lock-
\$15**

AT Devices for Recreation



Adapted Wii Remote-\$350

http://www.youtube.com/watch?v=iy1HwipStG8&feature=player_embedded



Contact info:

Jeannie Krull, MS/CCC-SLP
AT Coordinator
IPAT Technology Access Center
3240 15th St. S., Ste. B
Fargo, ND 58104
1-800-895-4728
www.ndipat.org
jmkrull@ndipat.org