

NORTH DAKOTA PART C EARLY INTERVENTION PROGRAM

FVND EXTENDED LEARNING

APRIL 25, 2022

PRESENTER: ROXANE ROMANICK, MSW



INFANTS, TODDLERS AND THEIR FAMILIES...



WHAT DRIVES EARLY INTERVENTION SERVICES?

Individuals with Disabilities Education
Act (IDEA)

✓ Part C



NATIONAL LANDSCAPE...

- All 50 states and 6 territories participate in the federal Part C program and receive a discretionary federal grant from the Department of Education
- 3.2% of all of US infants and toddlers are served under Part C (363,387)
- The total revenue that was reported in 2021 across federal, state and local levels to support Part C systems was \$3,457,119,133



<https://ectacenter.org/partc/partcdata.asp>

<https://www.ideainfanttoddler.org/pdf/Part-I-2021-Executive-Summary.pdf>

HISTORY



- Pilot funding prior to passage of Public Law 99-457 Part H in 1986
- Many services in place prior to Part C enacted
- Change happened because of advocacy from families and teachers
- States had to choose lead agency
- Original bill contained a Federal Interagency Coordinating Council
- Discretionary for states
- Not permanently authorized compared to Part B

THE FEDERAL PERSPECTIVE...

Level	Authority	Funding Approval	Management	Advisory	Vehicles of Change
Federal	Individuals with Disabilities Education Improvement Act (statute and regulations)	Congress	Department of Education (Dr. Miguel Cardona)  <ul style="list-style-type: none"> Office of Special Education and Rehab Services (Katherine Neas)  <ul style="list-style-type: none"> Office of Special Education Program (Valerie Williams) 	Public Hearings Public Comment Congressional testimony	<ul style="list-style-type: none"> Families Division of Early Childhood National Association for the Education of Young Children Zero to Three Family Voices National Disability Coalitions Infant and Toddler Coordinators Assc. (ITCA) Diagnosis specific org.

STATE LEAD AGENCIES

- Each state selects their own state agency to direct Part C Early Intervention activities.
- Typically the authority lies in the governor's office, but some states have adopted state statute.
- Impacts the design and implementation of services and funding methodologies
- North Dakota Department of Human Services

Respondents by Lead agency



North Dakota....

Level	Authority	Funding Approval	Management	Advisory	Vehicles of Change
State	State Administrative Code Policies, procedures, guidelines	ND Legislature – Funding is found in the Department of Human Services budget	Department of Human Services (Chris Jones) <ul style="list-style-type: none"> Developmental Disabilities Division (Tina Bay/Jackie <u>Adusumilli</u>) 	Legislative testimony Interagency Coordinating Council (NDICC) ND Autism Task Force Public comment and hearings	<ul style="list-style-type: none"> Families ND Protection and Advocacy FVND NDACP – Infant Development Providers Diagnosis specific org.

Local	Policies, procedures, guidelines	No local funding provided outside of in-kind supports such as office space, etc.	Regional DD Program Management Units Infant Development Providers ** See Note on following page	Provider boards	<ul style="list-style-type: none"> Families FVND Diagnosis special org. Infant Development Providers
--------------	----------------------------------	--	---	-----------------	--

*North Dakota's Early Intervention program relies heavily on the use of federal Medicaid as many eligible children can access the Intellectual Disabilities/Developmental Disability Home and Community Based Waiver. Medicaid and Medicaid waivers are funded with both federal and state match dollars, so advocacy efforts must be at both the federal and state level for adequate Medicaid funding and state general funds.

**Eligibility for Early Intervention happens at the regional level, but application for Medicaid occurs at the county level. Children who receive Early Intervention services will have a regional DD Program Manager and an eligibility worker at the county social services office.

WHAT DOES IDEA SAY:

- Children ages birth through 2 have access to a multi-disciplinary evaluations or assessments in all areas of development.
- Ensures that appropriate early intervention services are based on scientifically based research, to the extent that is practicable
- Parent Prior Notice must be provided before and after any decision-making
- Individual Family Service Plan Development
- Timely initiation of services
- Child Find



WHAT DOES IDEA SAY (CONT):

- Thorough assessment of Family Resources, Priorities, and Concerns
- Services delivered in the natural environment
- Service Coordination to assure services are in place.
- Assurance of adequately prepared staff
- Planning for Transition
- Interagency Coordination
- Parent Procedural Safeguards, including dispute resolution



PROCEDURAL SAFEGUARDS

- Similar to Part B Special Education
 - Prior Notice
 - Participation in Plan Development
 - Defines parent
- Parents should be presented with procedural safeguards at times of:
 - Evaluation/assessment
 - Initiation of services
 - Changes to services
 - Termination of services
- Part C services should include supports for both families and children
- Resources:
 - State Parent Training Information Centers
 - State Protection and Advocacy Projects



SYSTEM OF PAYMENT

- The funding sources used in North Dakota are:
 - State General Funds
 - Medicaid
 - Federal Part C grants
- Roughly, the Part C system costs about \$30 million for the biennium – excluding service coordination
- Upon eligibility, families are offered the opportunity to apply for Medicaid and screening to the IDD/DD Waiver
- ND does not have family fees, which are allowed under IDEA
- Infant and Toddler Coordinators' Association prepares an annual Finance Survey and Report on the fiscal health of state EI programs. www.ideainfanttoddler.org



AGES SERVED AND ELIGIBILITY

AGES SERVED

- Part C primarily addresses infants and toddlers, birth through two
- States can elect to extend Part C to preschoolers. Birth to 5 Mandate states – not ND
- Transition requirements within the statute

ELIGIBILITY

- Minimum standards in federal statute, states can further define
 - ND 25% in two areas, 50% in one area
- High Risk Conditions/Presumptive eligibility/



REFERRAL

	Right Track	ND Part C Early Intervention
Managed by Dept of HS	X	X
Uses Part C Federal Grant Funding	X	X
Single point of entry for referral	X	X
Anyone can refer	X	X
Conducts developmental screening	X	
Conducts evaluations/assessments		X
Cost to Family	None	None
Occurs in the child's natural environment	X	X
IFSP Development		X
Voluntary	X	X


ANNUAL FEDERAL REPORTING/PUBLIC REPORTING

- Every state must report by Feb. 1st their performance on 11 indicators, one of which is a State Systemic Improvement Plan
- States have just filed their FFY '20 reports covering 7.1.20 to 6.30.21 on Feb. 1, 2022
- ND's reports can be found at:
<https://www.nd.gov/dhs/services/disabilities/earlyintervention/partcinfo/index.html>
- Assignment of Level of Determinations
- All states have to open up their federal applications for public comment prior to submission in April

STATE PERFORMANCE PLAN / ANNUAL PERFORMANCE REPORT: PART C
for STATE FORMULA GRANT PROGRAMS under the Individuals with Disabilities Education Act

For reporting on
FFY 2019

North Dakota



PART C DUE
February 1, 2021

U.S. DEPARTMENT OF EDUCATION
WASHINGTON, DC 20202



INTERAGENCY COORDINATING COUNCILS...

Per statute, must exist in each state:

<http://ectacenter.org/contact/iccchair.asp>

Typically governor appointed

Membership must include at least 20% parent participation – ND is 30%

Membership is dictated by federal statute

Must assure that an annual report is filed with the governor's office

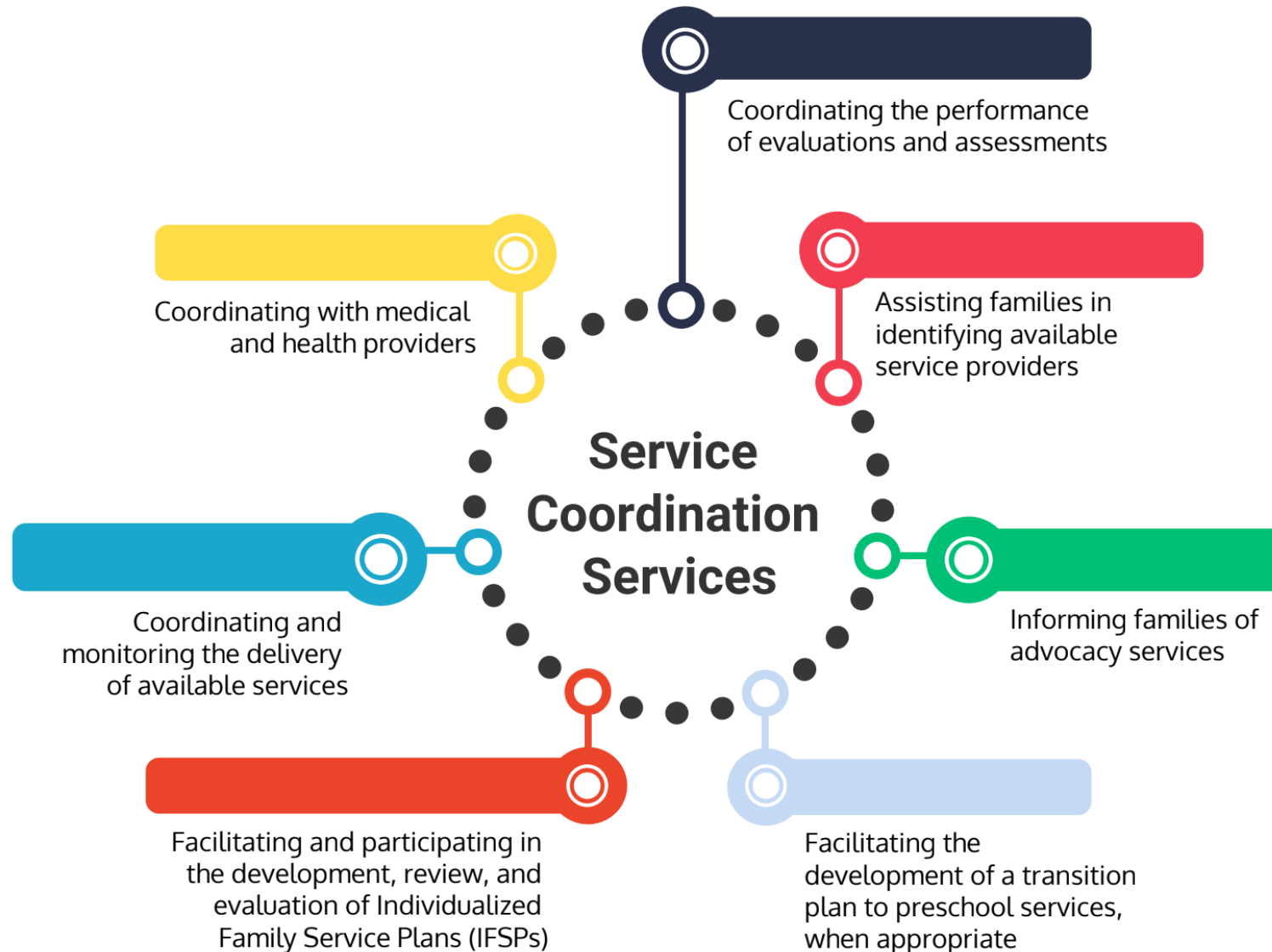
<http://ectacenter.org/topics/intercoord/icc.asp>

SERVICE COORDINATION IN ND

- Is a dedicated model
- Is provided by state employees organized into regional DD units - Developmental Disability Program Management staff
- Every family in ND Part C Early Intervention has a service coordinator
 - Mandated requirement
 - One of the 17 IDEA services
- Paid for by a mix of state general funds and Medicaid funding



FUNCTIONS OF SERVICE COORDINATOR



NATURAL ENVIRONMENTS

- It's the law
- Promotes early expectations of inclusion and learning with daily activities
- Division of Early Childhood Recommended Practices - <http://www.dec-sped.org/dec-recommended-practices>
- Correct implementation should never mean less and poorer quality service
- Family Guided Routine-based Intervention <http://fgrbi.fsu.edu/>



BASIC PRINCIPLES OF HELPING ALL YOUNG CHILDREN LEARN AND GROW



Young children learn best when they are taught everyday life skills like sharing, playing, moving, and communication during regularly, occurring daily activities with familiar people

TRANSITION AT AGE 3: FEDERAL REQUIREMENTS

Percent of all children exiting Part C who received timely transition planning to support the child's transition to preschool and other appropriate community services by their third birthday including:

- (a) IFSPs with transition steps and services;
- (b) notification to LEA, if child potentially eligible for Part B;
- (c) transition conference, if child potentially eligible for Part B.

TRANSITION IN ND

- IDEA supports and Medicaid waiver supports unbraid
 - Ongoing Medicaid coverage
- Assessment/evaluations/meetings
- Timelines
- ND Guidance:
<https://www.nd.gov/dhs/services/disabilities/earlyintervention/stateguidelines/transition-guide.pdf>
- Decision-making/Information gathering



TIPS FOR PARTNERING

- Understand how your particular state is organized so you can assist with referrals and advocacy
- Understand how services are funded
- Reach out to your state Parent Training and Information Center(s) to see how they can support your families with infants and toddlers.
- Read your the ICC minutes on a regular basis
- Recruit parents to serve on the ICC. Provide leadership training to them.
- Annually review ND's Annual Performance Report, Level of Determination, and Federal Part C Application.
- Provide public comment when offered.
- Work with local providers/service coordinators to educate and inform families on connecting with services, understand their rights, and have a smooth transition out of Part C.



THANK YOU...

Roxane Romanick

Designer Genes Executive Director

info@designergenesnd.com

www.designergenesnd.com

701.391.7421



Use of picture approved by Liz Romanick